

Vortex lines in a cubic magnetic nanodot: structure and dynamics

Philippe Depondt¹ and Jean-Claude Lévy²

¹Institut des NanoSciences de Paris (INSP), Sorbonne Université, CNRS-UMR 7588, 75005 Paris, France

²MPQ, UMR CNRS 7162, Université Paris Diderot, Université de Paris, 75013 Paris France

Abstract. Langevin simulations of cubic magnetic nanodots were performed using the Landau-Lifshitz equation with exchange and dipolar interactions. Vortices tend to organize as lines: we establish the structure and dynamics thereof for a large range of the dipolar versus exchange ratio. In these lines tend to be bent and twisted. For large values of the dipolar interaction, a complex network of vortex lines arises. Dynamics evidences low frequency collective gyrotropic motions of vortex lines which maintain their distance during motion.

1 Introduction

A tremendous amount of both experimental and theoretical work is being done on magnetic nanodots for obvious practical purposes such as data storage and manipulation, but also from a fundamental viewpoint for their often challenging behavior.

Since the first observations of Weiss domains [1], many investigations on the nature of these complex magnetic structures [2] and of their dynamical properties [3] were carried out. Magnetic nanodots, through increased performance and miniaturization, follow the same trends as electronic devices with Moore's law. After magnetic tapes, ultrathin quasi-2D films were produced [4], then magnetic vortices were predicted theoretically to occur under the competition between exchange and dipolar interactions [5, 6], and observed experimentally in nanodisks [7, 8]. New kinds of magnetic memories linked with the polarity of these nanodisks were introduced [9]. Studies on different nearly 2D nanodots showed that the influence of anisotropic Dzyaloshinsky-Moriya interactions, magnetic structures rather similar to skyrmions are predicted [10], observed and called skyrmions [11], the advantage of skyrmions with respect to standard vortices being their reduced size [12].

The competition between long-ranged interactions such as dipolar ones, and short-ranged interactions such as exchange leads to the domain organization of magnetic samples [2]. Shape and size effects result from this competition. The shape effect, also called magnetostatic effect, has been long well-known in compasses. More recently, miniaturized needles are moved by means of distant magnetic fields, with mechanical or thermal effects for instance applied to dealing with cancer tumors [19]. The size and shape of elongated nano fibers can be controlled by means of chemistry in polyols [20–22] and by means of electro-chemistry with further thermal treatment [23], with many applications. A new application of such electro-chemical

treatments [23] enlarges these fibers in some places by thermal heating to form blobs. Such a connected set is similar to a set of neurons and axons: a useful analogy in the now very active field of neuromorphic spintronics applications [24].

The dynamics of these many new magnetic structures is obviously of interest. The study of magnetic excitations, spin waves in thin films, which were used in magnetic tapes, soon revealed a specific behaviour among other excitations: a wavelength dependent velocity [25]. This result introduced further questions on the possibility of 2D magnetic material sets open large possibilities for finding new excitation spectra and thus metamaterials. An original spectrum is observed for fractal sets when only exchange and a saturating magnetic field occur: in these connected samples, a very complex spectral structure with many gaps is observed [27–29]. These gaps and their spectral locations strongly depend on the specifics of this potentially rich lacunary structure. The introduction of dipolar interactions in such magnetic structures leads even in standard samples to new specific modes which occur at rather low frequency, in the terahertz domain as early observed from Brillouin scattering [30, 31]. With such possibilities of ap-

plications as metamaterials in this very interesting spectral domain, magnonics, the observation of spectral features in such new materials, received a lot of attention [32–35]. A great advantage of extended structures actively submitted to dipolar interactions is the coupling of physically disconnected parts. It opens the path many studies in this very rich field of lacunary systems. This choice of structures considerably enlarges the field and so the possibility of searching for new metamaterials where gaps are crucial [36]: for instance, special orderings such as fractal ones [33] or orders induced by Fibonacci series [37] were recently considered with evidence for gaps in the spectrum.

Here we are interested in the study of structure and low frequency dynamics of a magnetic nanocube, by means

e-mail: depondt@insp.jussieu.fr

of Langevin dynamics at low temperature, i.e. far from Curie and Kosterlitz-Thouless transitions, in presence of exchange and dipolar interactions. In this basic study a large variation of the ratio dipolar interaction versus exchange is considered. This trick enables us to consider different materials, and also to simulate different sizes from our study of a (64 64 64) cube. The use of this cube as a mesh opens the path for a full study from an atomic nanocube up to a very large cubic sample, analysing in this way the transition from a single domain without vortex, up to a full set of vortices and domains, both on the viewpoints of structure and dynamics, when taking into account the complete screening of a complex magnetic structure. Of course, this arrangement of domains and vortices is expected to occur [38–40], but the perfect lack of impurities and defects would be impossible to observe experimentally. So, this numerical experiment which avoids the nuisance of impurities brings a new paradigmatic brick to magnetism. A later comparison with experimental results, even with defects, sounds attainable since recently a high level of resolution has been obtained from electron spin holography [41, 42] and even with time resolution [43] in different ways.

The long ranged dipolar interaction has several analogues in physics. Similar situations are issued from solutions of a Coulomb like equation with a linear Dirac like singularity at the origin. In mechanics the interaction between dislocations lies among these analogues. In the case of dislocations, atoms are not rigid and the mobility along dislocations, an essential feature, plays a main part. A strong mobility forbids a comparison with the case of magnetic vortices where matter remains perfectly static. However, in the very special case of hard materials which include numerous useful impurities which stack the possible displacements along dislocations in a quite rigid manner, such a comparison makes sense. And in this case a complex network of dislocations has been recently observed to occur with different crystallites between dislocations [44]. This result is quite comparable to our present observation of differently oriented magnetic domains parting magnetic vortices as an effective topological repulsion. Moreover, the atomic mobility which occurs in elasticity could introduce, in the case of spins, the principle of a synaptic like memory process, an Hebbian link, for neuromorphic spin applications.

2 Simulation

2.1 Model

The model system consists in a rigid (64 64 64) simple cubic lattice (i.e. $2^8 = 262144$ spins), on which classical spins are free to rotate following the Landau-Lifshitz equation of motion at finite temperature [71]:

$$\frac{ds_i}{dt} = \frac{s_i \times \mathbf{H}^e + s_i \times (s_i \times \mathbf{H}^e)}{1 + \alpha^2} \quad (1)$$

in reduced units and where s_i is the spin on site i , α a damping coefficient and

$$\mathbf{H}^e = \mathbf{H} + \mathbf{H}^{th}$$

where \mathbf{H} is a Langevin-style random thermal field with zero mean and normal distribution such that:

$$\langle H_i^2 \rangle = 2 k_B T$$

where k_B is Boltzmann's constant and \mathbf{H}^e is the local field felt by spin i . The damping coefficient α is necessary as it makes the system relax toward thermodynamic equilibrium but it should be chosen small enough to have little influence on the dynamics of the system as it will tend to broaden vibrational peaks.

The local field is generated by the interactions with all other spins in the system, no external field being introduced in the problem in this work: it is time-dependent through the motion of the other spins. The local field consists here in two terms representing the exchange and dipole-dipole interactions:

$$\mathbf{H} = \mathbf{H}^{exc} + \mathbf{H}^{dip}$$

$$\mathbf{H}^{exc} = J \sum_{f \neq i} s_f$$

where J is a positive constant for a ferromagnetic interaction and $\sum_{f \neq i}$ is a sum restricted to nearest neighbours. The dipolar field writes:

$$\mathbf{H}_i^{dip} = d \sum_{j \neq i} \left(s_j \frac{3 \mathbf{s}_j \cdot \mathbf{r}_{ij}}{|\mathbf{r}_{ij}|^3} - \frac{\mathbf{s}_j}{|\mathbf{r}_{ij}|^3} \right) \quad (2)$$

where d is the dipole-dipole interaction strength and \mathbf{r}_{ij} the vector connecting sites i and j . We choose $d = 1$ so that J is also the dipole-exchange ratio. Other interaction types could easily be introduced but we concentrate here on the effects of the dipole-dipole interaction.

2.2 Method

2.2.1 Integration of the spin precession motion

The instantaneous motion produced by equation (1) is a precession around the effective field \mathbf{H}^e which conserves $|s_i|$, so that it is adequate to use the Rodrigues rotation matrix [72] to integrate the equation of motion:

$$s_i(t + \tau) = \mathbf{R}_i(t) s_i(t)$$

where τ is the integration time-step, with

$$\mathbf{R}_i(t) =$$

$$\begin{pmatrix} h_x^2 w + v & h_x h_y w & h_z u & h_x h_z w + h_y u \\ h_x h_y w + h_z u & h_y^2 w + v & h_y h_z w & h_x u \\ h_x h_z w & h_y u & h_y h_z w + h_x u & h_z^2 w + v \end{pmatrix}$$

where $u = \sin \theta$, $v = \cos \theta$, $w = 1 - v$, while the precession angle is $\theta = |\mathbf{H}^e| \tau$. Coordinates $h_{x,y,z}$ are those of the unit vector $\mathbf{h} = \mathbf{H}^e / |\mathbf{H}^e|$.

The so-called "improved Euler" or Heun method [66] is used to integrate equation (1) numerically and the damping coefficient α is chosen small enough not to perturb the dynamics of the system in the relevant frequency range.

2.2.2 Dipole-dipole interaction

Since the dipole-dipole interaction decreases with distance as $1/r^3$, each spin is under the influence of all others and cutoff radii and other such approximations cannot be used. Writing the interaction as a convolution and then using the convolution theorem and fast Fourier transforms significantly accelerates computations [66].

2.3 The search for vortex cores

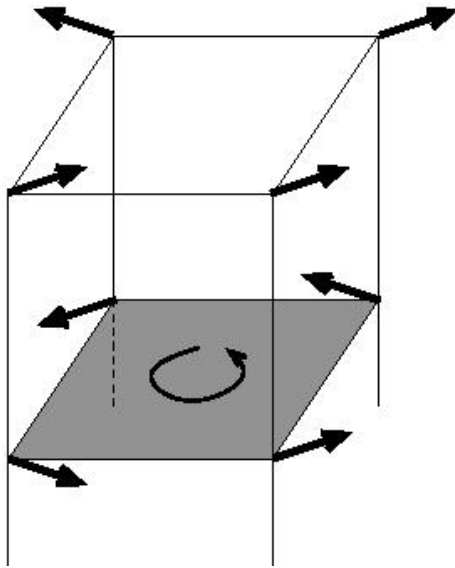


Figure 1. A vortex core is detected within a given square if in equation (3) equals 2. The black arrows represent the spin directions at each vertex.

The introduction of dipole-dipole interactions will quite often generate vortices and anti-vortices, the cores thereof must be detected. If we consider one plane (e.g. (x, y)) of the cubic lattice, the vortex-cores reside within the squares of the lattice, and arise when the projections of the four neighbouring spins on the the square's plane “wrap around” the square (figure 1). One can thus compute the four angles $\theta_i; i \in [1; 4]$ that these projections make with a given axis. In the sum

$$= p(\theta_2 - \theta_1) + p(\theta_3 - \theta_2) + p(\theta_4 - \theta_3) + p(\theta_1 - \theta_4) \quad (3)$$

$p(\cdot)$ restricts angle to the $[-\pi; \pi]$ interval; if equals 2π then a vortex-core is present on that site, while if the sum equals -2π it is an anti-vortex; otherwise there is no such singularity on that site. This search must be done in the three relevant planes (x, y) , (y, z) and (z, x) of the cubic lattice: the polarization of the vortex will then be along x or y respectively.

2.4 Vortex core line detection

The result of such a simulation with vortex-core detection will consist in a list of vortex-core sites which changes with time: in principle, to analyse such complex data,

graph-theory based methods [73] could be used, however we adopt here a simpler procedure based on the specific physics of our problem. In three dimensions, vortex-cores are apt to gather up in lines which can have more or less complicated shapes: they can be more or less sinuous or “thick”. In practise, these lines are obtained through a neighbour-of-neighbour-of-neighbour type of procedure: one chooses a vortex-core, looks for neighbours, then neighbours of these neighbours, etc., in a recursive manner. The simplest approximation of one vortex line is a straight line (figure 2). The orientation of that straight line will provide the overall orientation of the sinuous vortex core line, while the differences will yield the internal structure and dynamics of the line.

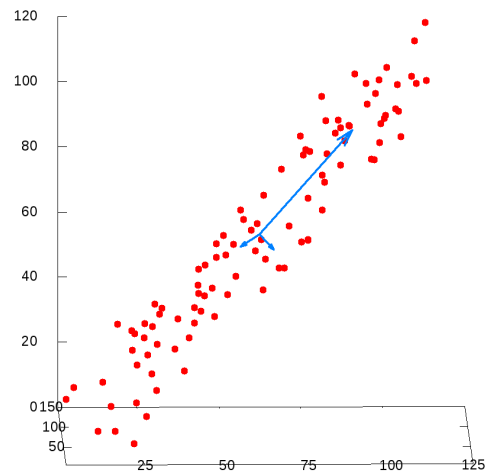


Figure 2. Example of a set of vortex cores and the analysis results obtained through equation (4). The blue vectors are the eigenvectors multiplied by the corresponding standard deviations.

A vortex line is defined by vortex cores at locations:

$$\mathbf{r}_i = \begin{pmatrix} x_i \\ y_i \\ z_i \end{pmatrix}; i \in [1; n]. \text{ The center of the vortex line is thus}$$

given by: $\mathbf{r}_0 = \sum_i \mathbf{r}_i / n$. The direction of the line is a unit

$$\text{vector } \mathbf{e} = \begin{pmatrix} u \\ v \\ w \end{pmatrix} \text{ with } u^2 + v^2 + w^2 = 1. \text{ The coordinates}$$

of a point on the line are therefore: $\mathbf{r} = \mathbf{r}_0 + \delta \mathbf{e}$ where δ is a scalar. We want that line to be as close as possible to the vortex cores. Let δ_i be the value of δ for which the segment that joins the line to the core is normal to the line direction:

$$(\delta_i - \delta) \mathbf{e} \cdot \mathbf{e} = 0$$

where:

$$\delta_i = \begin{pmatrix} x_i \\ y_i \\ z_i \end{pmatrix} - \mathbf{r}_0$$

thus:

$$\mathbf{d}_i = \delta_i \mathbf{e}$$

The squared distance between the set of vortex cores and this line is

$$\begin{aligned} R^2 &= \sum_i ((x_i - u)^2 + (y_i - v)^2 + (z_i - w)^2) \\ &= \sum_i \frac{2}{x_i} + \frac{2}{y_i} + \frac{2}{z_i} \frac{1}{i} \\ &= \sum_i \frac{2}{x_i} + \frac{2}{y_i} + \frac{2}{z_i} (x_i u + y_i v + z_i w)^2 \end{aligned}$$

which should be minimized with the constraint that \mathbf{e} is a unit vector:

$$\begin{aligned} \frac{\partial}{\partial u} (R^2 - \lambda(u^2 + v^2 + w^2)) &= 0 \\ \frac{\partial}{\partial v} (R^2 - \lambda(u^2 + v^2 + w^2)) &= 0 \\ \frac{\partial}{\partial w} (R^2 - \lambda(u^2 + v^2 + w^2)) &= 0 \end{aligned}$$

where λ is a Lagrange multiplier. Thus:

$$\frac{\partial}{\partial u} R^2 - 2\lambda u = 0; \quad \frac{\partial}{\partial v} R^2 - 2\lambda v = 0; \quad \frac{\partial}{\partial w} R^2 - 2\lambda w = 0$$

$$\begin{aligned} \sum_i [x_i u + y_i v + z_i w] x_i &= u \\ \sum_i [x_i u + y_i v + z_i w] y_i &= v \\ \sum_i [x_i u + y_i v + z_i w] z_i &= w \end{aligned}$$

or

$$\begin{pmatrix} \sum_i x_i^2 & \sum_i x_i y_i & \sum_i x_i z_i \\ \sum_i x_i y_i & \sum_i y_i^2 & \sum_i y_i z_i \\ \sum_i x_i z_i & \sum_i y_i z_i & \sum_i z_i^2 \end{pmatrix} \mathbf{e} = \lambda \mathbf{e} \quad (4)$$

which is a symmetric eigenproblem which can easily be solved by standard methods.

Since this is a (3x3) problem, we obtain 3 eigenvalues and as many eigenvectors. The eigenvalues, divided by n , are the variances of the distance from the actual points projected on the directions defined by the eigenvectors: this defines an ellipsoid, the longest axis of which is the overall orientation of the line, and the two others the dispersion in the normal directions. This procedure is clearly very similar to finding the inertial tensor of a set of masses [74].

Figure 2 shows a set of points and the three eigenvectors multiplied by the associated standard deviation. Of course the largest eigenvalue gives the overall direction of the line.

The time evolution of $\mathbf{r}_0(t)$ should yield the translational motion, if any, of the vortex line, that is $\mathbf{a}(t)$, the rotational motion of the line as a whole. The separations \mathbf{d}_i between the straight line and the actual vortex core positions \mathbf{r}_i should provide the internal motions of the vortex line.

The separations \mathbf{d}_i write:

$$\mathbf{d}_i = \mathbf{r}_i - \mathbf{r}_0 = \delta_i (\delta_1 \mathbf{e}_1 + \delta_2 \mathbf{e}_2 + \delta_3 \mathbf{e}_3)$$

These vectors can be expressed in a reference frame $(\mathbf{e}_1; \mathbf{e}_2; \mathbf{e}_3)$, where \mathbf{e}_3 is equal to \mathbf{e} and \mathbf{e}_1 and \mathbf{e}_2 are the two other eigenvectors. This yields:

$$\begin{aligned} \mathbf{d}_i \cdot \mathbf{e}_1 &= \delta_i \delta_1 \\ \mathbf{d}_i \cdot \mathbf{e}_2 &= \delta_i \delta_2 \\ \mathbf{d}_i \cdot \mathbf{e}_3 &= \delta_i \delta_3 \end{aligned} \quad (5)$$

If we want to include the position of the vortex upon the line, we can just as simply write it in the $(\mathbf{e}_1; \mathbf{e}_2; \mathbf{e}_3)$ reference frame:

$$\begin{aligned} \mathbf{r}_0 &= r_0 (\delta_1 \mathbf{e}_1 + \delta_2 \mathbf{e}_2 + \delta_3 \mathbf{e}_3) \end{aligned} \quad (6)$$

We therefore now have the means to attempt to understand vortex line dynamics.

2.5 Simulation parameters

All simulations were done at low temperature $T \approx 0.001$ in reduced units, to be compared with the transition temperature in the 2-D Kosterlitz-Thouless model $T_K = 0.7$ with $J = 1$ and $d = 2$ [0.005; 0.4], that is, a large range of dipolar strengths. Several typical initial conditions were selected: with uniform magnetization (i.e. no vortices), one central vortex line parallel to the z -axis and four vortex lines also parallel to z . The integration time-step runs from $\Delta t = 0.005$ for $d = 0.005$ to $\Delta t = 0.001$ for $d = 0.4$ to account for the acceleration of the dynamics as increased. The damping coefficient of the Landau-Lifshitz equation (1) was set to $\gamma = 0.01$ in reduced units which is a compromise between reasonably rapid thermalization and not too much interference with the system's dynamics. The system was left to relax to whatever configuration it chose and then averages obtained.

3 Analysis of simulation results

3.1 Configurations

Figures 3 and 4 show two typical configurations for $d = 0.005$ and 0.1 . Both were obtained after relaxation of identical initial conditions chosen as four straight vortex-core lines parallel to the z -axis. The colors indicate the out-of-plane component of the spins while the arrows show the in-plane components thereof: vortex-cores are visible through the in-plane components but also through the out-of-plane component: this is a well-known effect of the exchange-dipole competition. The first observation to be made from these figures is that the vortex-core location for each "slice" is approximately the same, meaning that vortex-cores indeed line up (in this case, parallel to the z -axis to initial conditions, but the three axes are of course equivalent). The effect of sample boundaries can also be observed in these figures: spins tend to remain parallel to surfaces and edges resulting in competitions which clearly are not easily solved by the system.

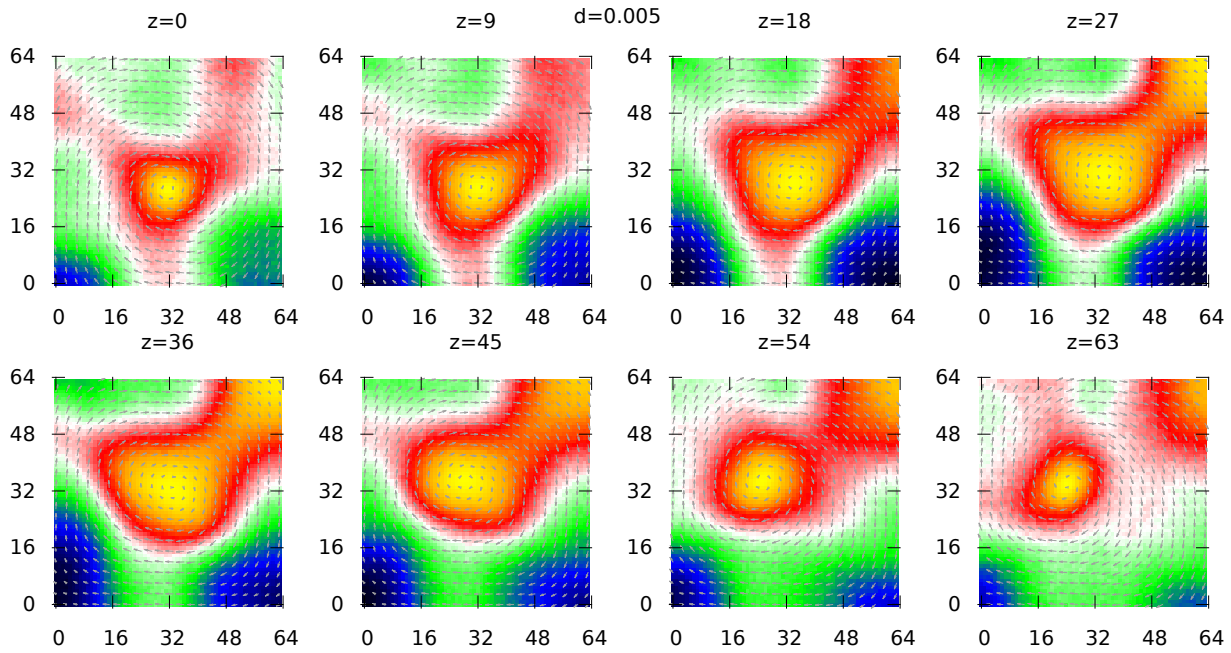


Figure 3. Snapshot con figuration after relaxation for $d=0:005$ and $T=0:001$. Grey arrows show the in-plane components of the spins, colors the out-of-plane component thereof (black, blue and green mean: negative; red, orange, yellow: positive; white: in-plane). Each image represents one (x, y) plane: $z=0$ or 63 are the top and bottom surface monolayers, while the others lay within the bulk. Initial conditions consist in four straight vortex lines parallel to the z -axis.

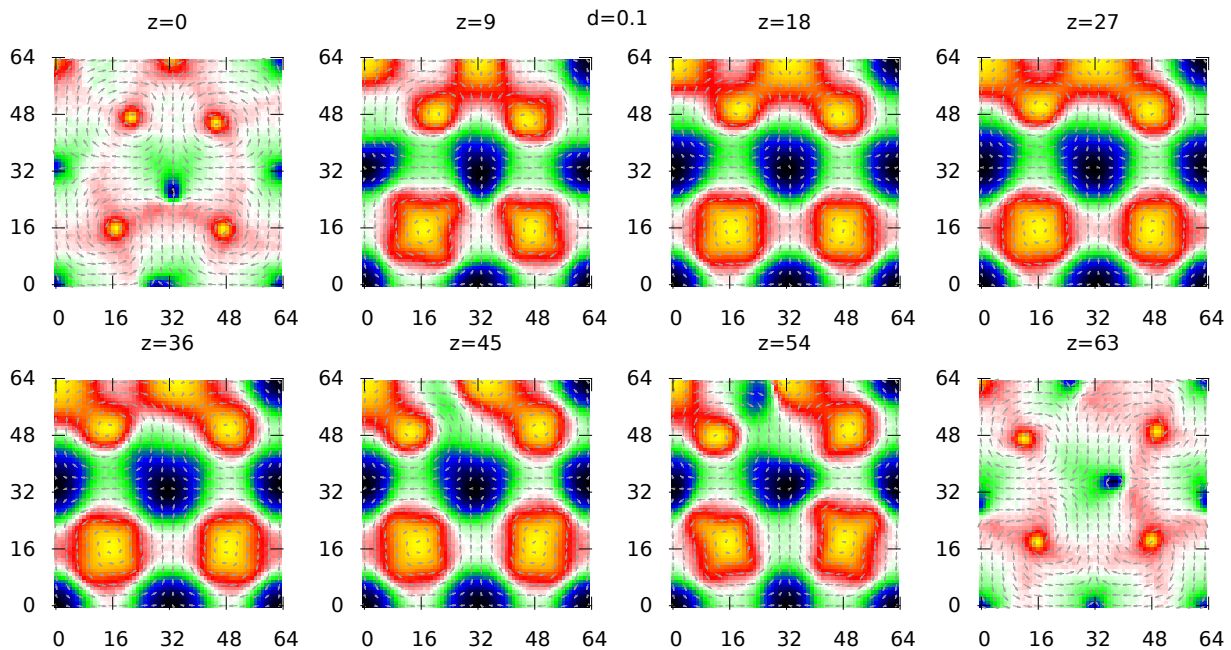


Figure 4. Same as figure 3 for $d=0:1$. Four vortex lines are visible, along with an anti-vortex line, approximately located between the vortex lines.

For $d=0:005$, the system spontaneously evolves to figures), broad in the middle (layers 27 and 36). Flux clowards a single vortex line con figuration with quite a lot of sure induced by the dipole-dipole interaction implies that disorder, while for $d=0:1$ the four vortex line con guration remains. If the “width” of the line is measured by surface: the out-of-plane component therefore is energetically not favourable on surface layers so that the vortex is non-zero, one observes, firstly that this width tends to core extent as defined by the out-of-plane component will decrease with increasing dipolar interaction, which is not reduced near surfaces, and not so within the bulk. surprise, while it changes quite a lot within the bulk of the We need to address the issue of whether these are equi-sample: narrow on the surface (layers 0 and 63 in both equilibrium con figurations. Simulations with different initial

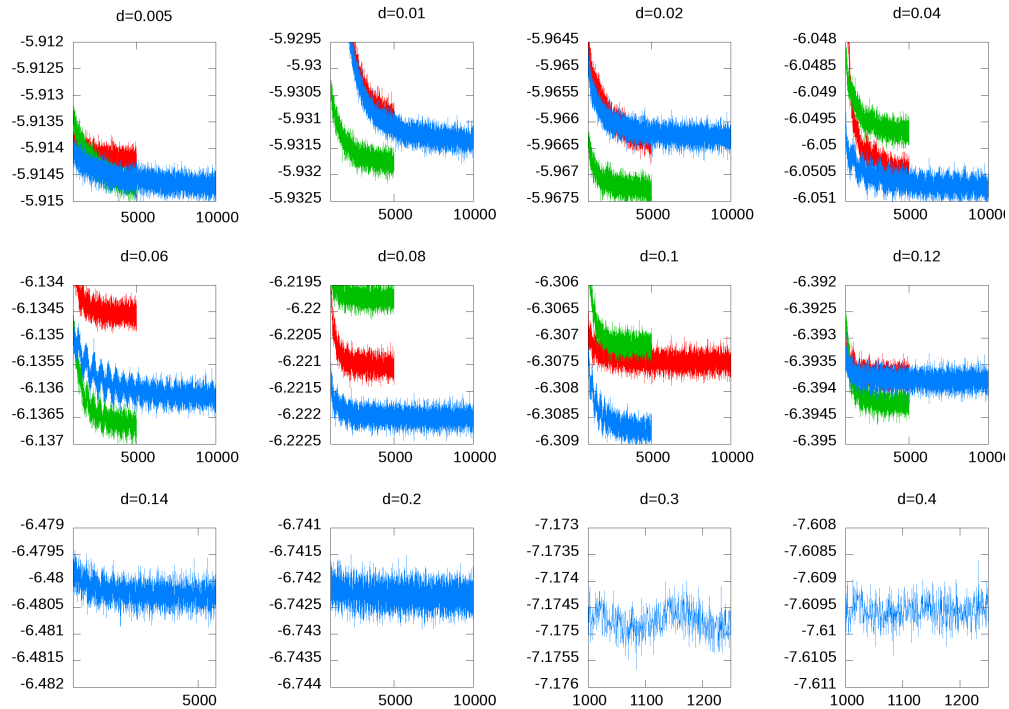


Figure 5. Energy as a function of time (axes' labels were removed for space) for $d \in [0.005; 0.4]$. Several initial conditions were chosen: uniform spin orientation (i.e. no vortex) in red, one straight vortex-core line parallel to the z -axis in green, and four straight vortex-core lines parallel to x in blue. The energy range length is 0.003 for all graphs, but the range itself is shifted from graph to graph.

d	0.005	0.01	0.02	0.04	0.06	0.08	0.1	0.12	0.2	0.3	0.4
uniform	1	1	1	2	2	4	4	4			
1 line	1	1	1	1	4	4	4	4			
4 lines	1	1	4	4	4	4	4	4	4	4	4
lowest energy	1	1	1	4	4	4	4	4	4	4	4

Table 1. Effect of the initial configuration choice. Initial configurations with uniform magnetization, one vortex-core line or four vortex-core lines were tested and results in either uniform magnetization, one line or four lines. The last line of the table shows which appears to be the lowest energy configuration and therefore a good candidate for being the ground state.

configurations but otherwise identical were done: Figure 5.3.2 Vortex cores

shows the time dependence of the energy of these simulation runs for a sampling of values of the dipolar to exchange ratio d . In some situations (e.g. $d = 0.005$) all initial conditions end up producing the same final energy which turns out to correspond to equivalent configurations (e.g. for $d = 0.05$ all three initial configurations yield a final state with one vortex-core line). Table 1 summarizes the effect of the choice of the initial condition. By comparing Figure 5 and table 1 one may thus conclude that the one vortex line configuration has the lowest energy for $d \in [0.005; 0.02]$, while the four vortex line configuration is the most stable for $d \in [0.04; 0.4]$. These values are comparable to the appearance of the “multi-vortex” phase in a (64×64) 2-dimensional sample [75]. These results also show that metastable states are easily reached, at low temperature at least, and the notion of ground-state should be taken with caution, because of, among others, surfaces on the one hand, and vortex-core pinning which was observed in two-dimensional simulations [67], on the other.

Direct observation of the configurations, while instructive, sometimes does not easily yield relevant information, so that we now focus on vortex-cores and forget about other details. Vortex-cores and anti-vortex-cores are detected via equation (3). Figures 6-8 show situations of increasing complexity with increasing dipole-dipole interaction. We can first confirm the previous remarks, that is the presence of one vortex line for small and four vortex lines for larger d . The single anti-vortex line between the four vortex lines is also visible when applicable. We also confirm that the polarization of the vortex core is parallel to the overall line orientation. However, it now appears clearly that these lines are twisted and that additional features are present: for $d = 0.1$ and more so for $d = 0.4$, other shorter vortex lines spontaneously arise in a normal direction: one may surmise that for larger samples three dimensional arrays of such lines may be relevant. For the higher dipole-dipole interaction case, it also seems that active re-

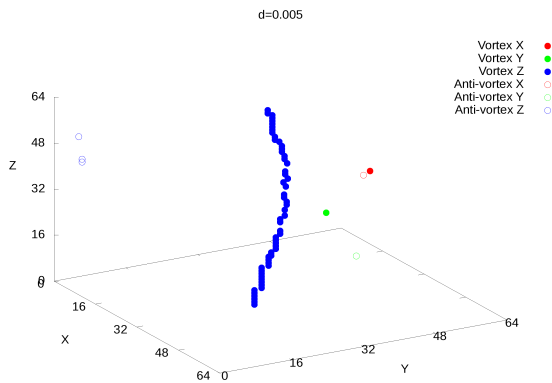


Figure 6. Snapshot of vortex and anti-vortex cores for $d = 0.005$. Vortices are represented by full circles, anti-vortices by open circles. (Anti-)vortices which are in the plane normal to \hat{x} are in red, those in the plane normal to \hat{y} in green, and those in the plane normal to \hat{z} in blue.

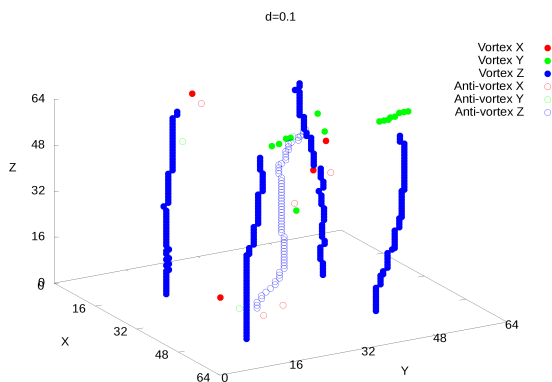


Figure 7. Snapshot of vortex-cores for $d = 0.1$. Symbol and color conventions are the same as in figure 6.

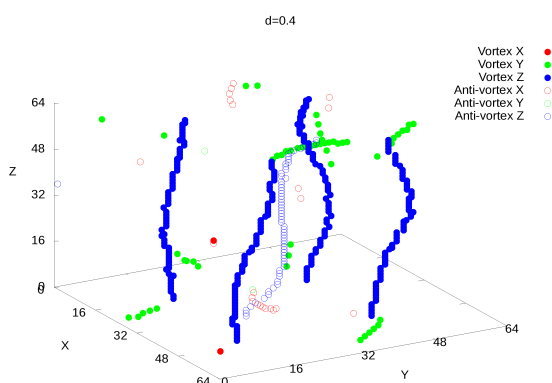


Figure 8. Snapshot of vortex-cores for $d = 0.4$. Symbol and color conventions are the same as in figure 6.

pulsion between vortex lines is present inducing additional bending of the lines.

3.3 Vortex core line dynamics

3.3.1 Line precession

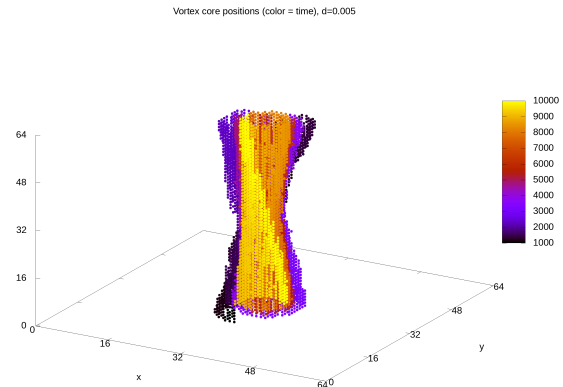


Figure 9. For $d = 0.005$ the above mentioned vortex-cores for which the color indicates time.

Figure 9 represents the time evolution of a vortex-core line and shows that a dynamics of these are to be observed: this can be done for all values. Again, we have a tremendous amount of data, out of which we would like to extract a few useful items. The next step is thus to carry out the analysis explicitly in terms of vortex lines as in section 2.4 and equation (4).

The first issue that must be addressed is the definition of when a vortex core is to be considered a neighbour of another. If we limit the search to nearest neighbours, it means in practise that only vortex-cores situated strictly on top of each other will be considered part of the same vortex line, so that only perfectly straight lines will be accepted. Some limit must then be defined, next nearest neighbours, or beyond: if one decides that the limit should be chosen at a distance less than 3, the two vortex-cores should be part of the same cube. This still seems a bit drastic since a vortex-core is a rather large object as can be seen in figures 3 and 4. At this stage, the threshold is set at 4 after gradually increasing it until the vortex-core lines thus detected correspond to those that the human eye will spontaneously establish: more rigorous procedures, e.g. Voronoi tessellation-based, are certainly possible.

Figure 10 shows the line dynamics for $d = 0.005$: a case for which we expect a one-line situation, in which the line is roughly parallel to \hat{x} . The straight blue \hat{z} component of \hat{r}_0 line at $z = 32$ in the top panel indicates that the z coordinate of the middle of the line lays midway in the sample, but the presence of other points at $z = 16$ and 48 also shows that sometimes the line gets cut somewhere in its middle, which lead to the suspicion that the vortex core density might be lower in the middle: this is consistent with the fact that the vortex-core sizes tend to be larger in the middle of the sample: the number of

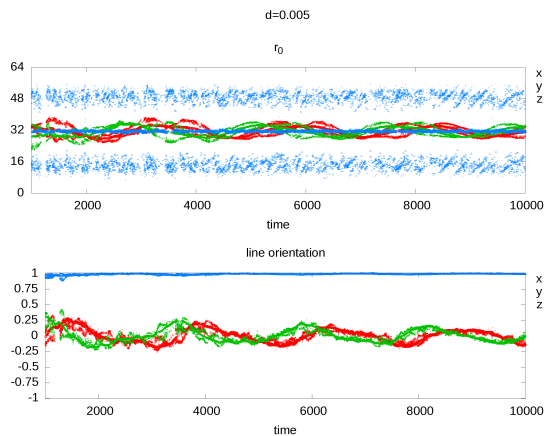


Figure 10. For $d = 0.005$ vortex core line dynamics. The line center r_0 coordinates are given in the top panel, the line orientation ϵ in the lower panel. Point sizes are proportional to line length.

detected vortex-core lines thus detected varies in this case between one and two. The x and y components oscillate which confirms lateral motion of the line taken as a whole. The bottom panel of figure 10 shows the time dependence of the coordinates of the line orientation. Unsurprisingly, since we expect the line orientation to be parallel to the z component (in blue) remains close to one. The other two components however oscillate showing a precession motion of the line.

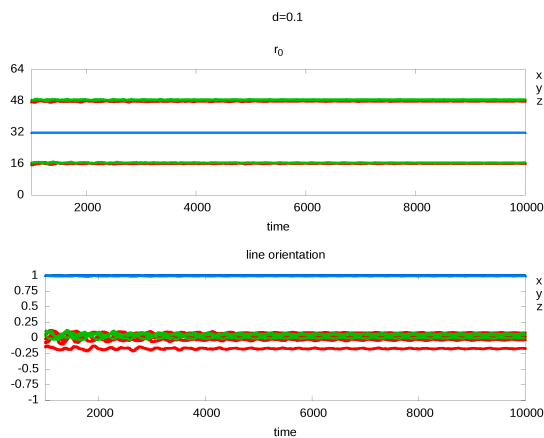


Figure 11. Same as figure 10 for $d = 0.1$.

Figure 11 provides the same information for $d = 0.1$. Several differences can be noticed. In the top panel, we still have one blue line for $z = 32$, but no others, meaning the line discontinuity disappears. The x and y contributions to r_0 yield 16 and 48, which is consistent with the fact that we now have four vortex-lines at approximately $x = 16, y = 16$, then $x = 16, y = 48$, and $x = 48, y = 16$, and finally $x = 48, y = 48$. The bottom panel clearly shows the vortex-line precession at a higher frequency than previously.

Similar results are obtained for increasing dipole-dipole interactions. The precession frequency increases

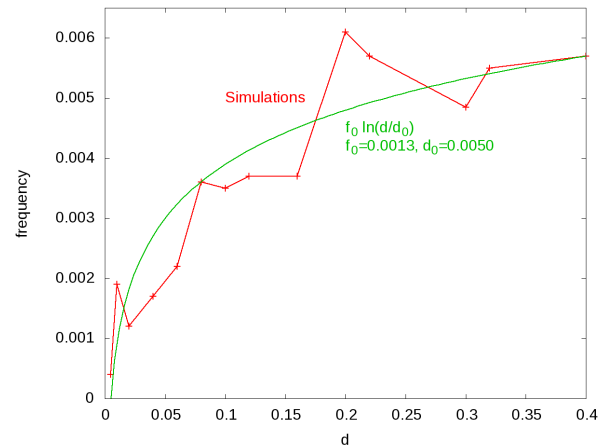


Figure 12. Precession frequency as a function of dipole-dipole interaction d (red line). The green line represents a least-square fit of a logarithmic function.

approximately as the logarithm of d as shown in figure 12. This allows to define a characteristic dipole-dipole exchange ratio $d_0 = 0.005$ for which the precession vanishes; a characteristic frequency $f_0 = 0.0013$ can also thus be defined.

3.3.2 Intra-line dynamics

Using equation (6), one potentially has access to the internal structure and motion of a vortex line. This however reaches beyond the scope of the present paper.

4 Discussion

Vortex-core motion, usually the gyrotropic motion, is well known, it has been observed and calculated in various situations, and many times interpreted through the generic Thiele equations [64, 67, 69, 76].

Miniaturization has another advantage, when dealing with useful active impurities scattered through a sample, in the possibility of reducing the averaging process over a large number of active “impurities”. Finally, the possibility of dealing with a highly sensitive single impurity without any statistics can be reached. For instance, in colour centres, an impurity acts as a perfectly localized extended atom or molecule, where the spatial extension is basically driven by the host dielectric constant [14], and similarly the energy difference between electronic levels is reduced. Doping centres in semiconductors also act as localized atoms with their different electronic levels and ionization [15]. So, the purpose of miniaturization up to a single impurity sounds to be quite fruitful in various fields. It was reached for colour centres in the case of nitrogen vacancies in diamond, with very low doping and nanoparticles [16]. Then the local magnetic field can be detected by means of magnetic resonance on the Zeeman split levels [17]. With such a tool the resolution of a single spin near the surface can be reached [17, 18]! Such studies open the path for an ultimate resolution of magnetic surface structures down to the atomic level. And quite numerous colour centres can be tried for such high-resolution applications.

References

- [1] P. Weiss, C.R. Ac. Sci. 143 1137 (1906).
- [2] A. Hubert, R. Schäfer, Magnetic domains, the analysis of domain structures (Springer Verlag, Berlin, 1998).
- [3] B.N. Filippov, Low Temp. Phys. 28 707 (2002)
- [4] A. Vaterlaus, C. Stamm, U. Maier, M.G. Pini, P. Politi, D. Pescia, Phys. Rev. Lett. 84, 2247 (2000).
- [5] E.Y. Vedmedenko, A. Ghazali, J.-C.S. Levy, Surf. Sci. 402-404 391 (1998) ; Phys. Rev. B 59 3329 (1999).
- [6] E.Y. Vedmedenko, H.P. Oepen, A. Ghazali, J.-C.S. Levy, J. Kirschner, Phys. Rev. Lett. 84, 5884 (2000).
- [7] R.P. Cowburn, D.K. Koltsov, A.O. Adeyeye, M.E. Welland, D.M. Tricker, Phys. Rev. Lett. 83, 1042 (1999).
- [8] S.P. Li, D. Peyrade, M. Natali, A. Lebib, Y. Chen, U. Ebels, L.D. Buda, K. Ounadjela, Phys. Rev. Lett. 86, 1102 (2001).
- [9] V. Uhler, M. Urbanek, L. Hladik, J. Spousta, M.-Y. Im, P. Fischer, N.Eibagi, J.J. Kan, E.N. Fullerton, T. Sikola, Nature Nanotechnology 8 341 (2013).
- [10] U.K. Kossler, A.N. Bogdanov, C. Pfeiderer, Nature Lett. 442 797 (2006).
- [11] F.N. Rybakov, N.S. Kiselev, Phys. Rev. B 99 064437 (2019).
- [12] A. Fert, V. Cros, J. Sampaio, Nature Nanotechnology 8 152 (2013).
- [13] Y. Fujishiro, N. Kanazawa, Y. Tokura, Appl. Phys. Lett. 116 090501 (2020).
- [14] J.H. Schulman, W.D. Compton, Color Centers in Solids (Pergamon, Oxford, 1962).
- [15] N.W. Ashcroft, N.D. Mermin, Solid state Physics (Saunders, Philadelphia, 1976).
- [16] F. Jelezko, J. Wrachtrup, Phys. Status Solidi A 203 3207 (2006).
- [17] E. Abe, K. Sasaki, J. Appl. Phys. 123 161101 (2018).
- [18] J.L. Webb, J.D. Clement, L. Troise, S. Ahmadi, G. J. Johansen, A. Huck, U.L. Andersen, Appl. Phys. Lett. 114 231103 (2019).
- [19] G. Vallejo-Fernandez, O. Whear, A.G. Roca, S. Hus-sain, J. Timmis, V. Patel, K. O'Grady, J. Phys. D: Appl. Phys. 46 312001 (2013).
- [20] D. Ung, G. Viau, C. Ricolleau, F. Warmont, P. Gredin, F. Fievet, Adv. Mater. 17 338 (2005).
- [21] F. Ott, J.-Y. Piquemal, G. Viau, in Magnetic Structures of 2D and 3D Nanoparticles (Pan Stanford, Singapore, 2016) 213.
- [22] M.A. Bousnina, A.Dakhlaoui-Omrami, F. Schoen-stein, Y. Soumare, A.H. Barry, J.-Y. Piquemal, G. Viau, S. Merccone, N. Jouini Nanomaterials 10 334 (2020)
- [23] N. Fokin, T. Grothe, A. Mamun, M. Trabelsi, M. Klöcker, L. Sabantina, C. Döpke, T. Blachowicz, A. Hütten, A. Ehrmann, Materials 13 1552 (2020).
- [24] J. Grollier, D. Querlioz, K.Y. Camsari, Nat. Elec-tron. K. Everschor-Sitte, S. Fukami, M.D. Stiles, Nat. Electron. (2020).
- [25] C. Kittel, Phys. Rev. 110 1295 (1958).
- [26] N.D. Mermin, H. Wagner, Phys. Rev. Lett. 17, 1307 (1966).
- [27] P. Monceau, J.-C.S. Levy, Phys. Lett. A 374 1872 (2010).
- [28] P. Monceau, J.-C.S. Levy, Physica E 44 1697 (2012).
- [29] P. Monceau, in Magnetic Structures of 2D and 3D Nanoparticles (Pan Stanford, Singapore, 2016) 159.
- [30] J.R. Sandercock, in Light scattering in solids III (Springer Verlag, Berlin, 1982) 173.
- [31] M.G. Cottam, J.Phys. C 16 1573 (1983).
- [32] M. Krawczyk, J.-C.S. Levy, D. Mercier, H. Puszkarski, Phys. Lett. A 282 186 (2001).
- [33] V.V. Kruglyak, S.OP. Demokritov, D. Grundler, J. Phys. D 43 264001 (2010).
- [34] J.W. Klos, M. Krawczyk, in Magnetic Structures of 2D and 3D Nanoparticles (Pan Stanford, Singapore, 2016) 283.
- [35] G. Gubbiotti, Three-Dimensional Magnonics (Pan Stanford, Singapore, 2019).
- [36] M. Kostylev, P. Schrader, R.L. Stamps, G. Gubbiotti, G. Carlotti, A.O. Adeyeye, S. Goolaup, N. Sing, Appl. Phys. Lett. 92 132504 (2008).
- [37] F. Lisiecki, J. Rychly, P. Kuswick, H. Glowinski, J.W. Klos, F. Gross, I. Bykova, M. Weigand, M. Ze-lent, E. Goering, G. Schütz, M. Krawczyk, F. Sto-biecki, J. Dubowik, J. Gräfe, Phys. Rev. Applied 11 054061 (2019).
- [38] J.-C.S. Levy, J. Magn. Magn. Mater. 373 2 (2015).
- [39] J.-C.S. Levy, in Magnetic Structures of 2D and 3D Nanoparticles (Pan Stanford, Singapore, 2016) 1.
- [40] P. Fischer, D. Sanz-Hernandez, R. Streubel, A. Fernandez-Pacheco, APL Mater. 8 010701 (2020).
- [41] A. Tonomura, T. Matsuda, J. Endo, T. Arii, K. Mishama, Phys. Rev. Lett. 44, 1430 (1966).
- [42] L.M. Lacroix, S. Lachaize, F. Hue, C. Gatel, T. Blon, R.P. Tan, J Carrey, B. Warot-Fonrose, B. Chaudret, Nano Lett. 12 3245 (2012).
- [43] S. Pile, T. Feggeler, T. Schars, R. Meckenstock, M. Buchner, D. Spoddig, B. Zingsem, V. Ney, M. Farle, H. Wende, H. Ohldag, A. Ney, K. Ollefs, Appl. Phys. Lett. 116 072401 (2020).
- [44] S. Xiang, S. Mao, H. Wei, Y. Liu, J. Zhang, Z. Shen, H. Long, H. Zhang, X. Wang, Z. Zhang, X. Han, Acta Materialia 116 343 (2016).
- [45] E. Y. Vedmedenko, A. Ghazali and J.-C.S. Levy, Surf. Sci. 402-404 391 (1998); J.-C.S. Levy and A. Ghazali in Nanostructured magnetic materials and their applications, eds D. Shi et alii, Springer Verlag Berlin (2002) 183.
- [46] O. Chubykalo, J.D. Hannay, M. Wongsam, R.W. Chantrell and J.M. Gonzalez Phys. Rev. B 65 184428 (2002) ; Ph. Depondt and F.G. Mertens, J. Phys.: Condens Matter 21 336005 (2009).
- [47] A. Tonomura, T Matsuda, J. Endo, T. Arii and K. Mihama, Phys. Rev. Lett. 44, 1430 (1980) ; Erratum Phys. Rev. Lett. 45, 74 (1980).

- [48] J.N. Chapman, *J. Phys. D : Appl. Phys.* 17 623 (1984).
- [49] For a review see S. Chikazumi, *Physics of Ferromagnetism* Clarendon Press Oxford (1997).
- [50] I.E. Dzyaloshinskii, *J. Phys. Chem. Solids*, 4 241 (1958); T. Moriya, *Phys. Rev. Lett.* 4 228 (1960).
- [51] C. Guillaud and R. Vautier, *Colloque National de Magnétisme, CNRS* 24 (1958).
- [52] J.-A. Cape and G.W. Lehman, *J. Appl. Phys.* 32 5732 (1971).
- [53] A. Vaterlaus, C. Stamm, U. Maier, M.G. Pini, P. Politi and D. Pescia, *Phys. Rev. Lett.* 84, 2247 (2000).
- [54] S.P. Li, D. Peyrade, M. Natali, A. Lebib, Y. Chen, U. Ebels, L.D. Buda and K. Ounadjela, *Phys. Rev. Lett.* 86, 1102 (2001).
- [55] E. Y. Vedmedenko, A. Ghazali and J.-C.S. Levy, *Phys. Rev. B* 59 3329 (1999); R.P. Cowburn, D.K. Koltsov, A.O. Adeyeye, M.E. Welland and D.M. Tricker, *Phys. Rev. Lett.* 83 1042 (1999). <https://www.overleaf.com/project/5ea08997d52ca900020975>
- [56] J.M. Kosterlitz and D.J. Thouless, *J. Phys. C* 6 1181 (1973).
- [57] U.K. Rossler, A.N. Bogdanov, C. Pfeiderer, *Nature Lett.* 442 797 (2006).
- [58] I. Privorotkii, *Thermodynamic theory of domain structures* John Wiley New York (1975); M. Gabay and T. Garel, *J. Phys. (Paris)* 46 5 (1985).
- [59] S. Mamica, *J. Appl. Phys.* 113 093901 (2013); 114 2333906 (2013).
- [60] P.B. Allen, J.L. Feldman, J. Fabian and F. Wooten, *Philos. Mag. B* 79 (1999); H. Hu, A. Strybulevych, J.H. Page, S.E. Skipetrov and B.A. Van Tiggelen, *Nature Phys.* 4 945 (2008).
- [61] P. I. Belobrov, V. A. Voevodin, V. A. Ignatchenko, *Sov. Phys. JETP* 61 (1985), 522
- [62] E. Y. Vedmedenko, A. Ghazali, J.-C. S. Lévy, *Surf. Sci.* 402 (1998) 391
- [63] S.-B. Choe, Y. Acreman, A. Scholl, A. Bauer, A. Doran, J. Stöhr, H. A. Padmore, *Science* 304, 420 (2004)
- [64] T. Kamionka, M. Martens, A. Drews, B. Krüger, O. Albrecht, G. Meier, *Phys. Rev. B* 83 (2011) 224424
- [65] O.V. Sukhostavets, B. Pigeau, S. Sangiao, G. de Loubens, V.V. Naletov, O. Klein, K. Mitsuzuka, S. Andrieu, F. Montaigne, K.Y. Guslienko, *Phys. Rev. Lett.* 111, 247601 (2013)
- [66] Nowak, U. in *Annual Review of computational physics IX* Stauder D. ed., World scientific (2001), p. 105.
- [67] Ph. Depondt, J.-C. S. Lévy, *Physics Letters A* 375 (2011) 4085-4090
- [68] Ph. Depondt, J.-C. S. Lévy, *Physics Letters A* 376 (2012) 3411-3416
- [69] K. Y. Guslienko, X. F. Han, D. J. Keavney, R. Divan, and S. D. Bader, *Phys. Rev. Lett.* 96 067205 (2006)
- [70] K. Y. Guslienko, G. N. Kakazei, J. Ding, X. M. Liu, A. O. Adeyeye, *Sci. Rep.* 5, 13881 (2015)
- [71] Chubylako O., Hannay J. D., Wongsam M., Chantrell R. W. and Gonzales J. M. *Phys. Rev. B* 65, 184428 (2002)
- [72] Rodrigues O., Des lois géométriques qui régissent les déplacements d'un système solide dans l'espace, et de la variation des coordonnées provenant de ces déplacements considérés indépendamment des causes qui peuvent les produire *Journal de Mathématiques pures et appliquées* 5, 380-440 (1840)
- [73] Pietrucci, F., Andreoni, W. *Phys. Rev. Lett.* 107, 085504 (2011)
- [74] L.D. Landau, E.M. Lifshitz *Mechanics* Pergamon Press (1960)
- [75] Ph. Depondt, J.-Cl. S. Lévy, F. G. Mertens, *Physics Letters A* 375 (2011) 628-632
- [76] A. A. Thiele *Phys. Rev. Lett.* 30, 230 (1973)
- [77] K. Y. Guslienko, G. R. Aranda, J. M. Gonzalez, *Phys. Rev. B* 81, 014414 (2010)